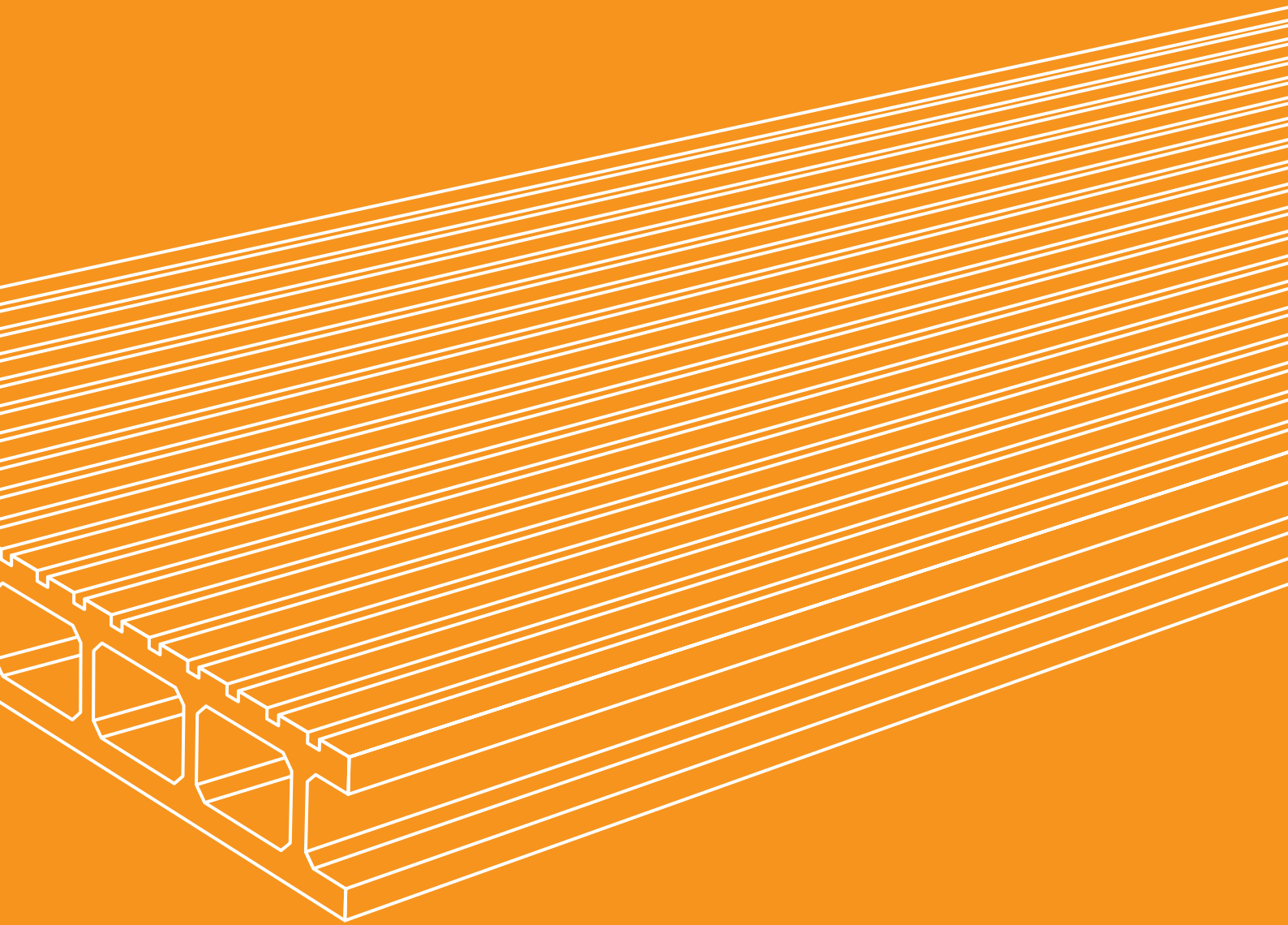


HYBRID COMPOSITE BOARDS



TIMBERNESS

Timberness are ecological and innovative composite boards based on the idea of a hybrid – a combination of two solutions maximizing benefits.

They are produced using an advanced, modern production line, and their quality is the result of compliance with the relevant production standards and careful selection of materials. A team with extensive experience in the industry is responsible for Timberness products. It is their energy that helps us continually improve our boards and finishing elements. The manufacturing process of Timberness boards takes place entirely within the European Union.



Wide range of applications

Hybrid boards by Timberness is a timeless alternative to natural wood or terrace tiles. Due to resistance to moisture and water, there is no need for maintenance and anti-slip properties, so they gain a functional advantage over other solutions. Their natural, wood-like appearance gives every place a modern character, which, thanks to the ease of care, can be maintained for years.





For your company



restaurants and hotel terraces, roof terraces,
pool decks, bridges, piers, public places

For your home



terraces, balconies, patios, decks,
porches, home pool decks and ponds

Advantages of hybrid boards

A composite board, although deceptively similar to a wooden board, really differs from it. It has greater strength than wood, it is more resistant to moisture and water, but also to moss, fungi and pests. It does not mildew, moulder or rot. In contrast to wood, it does not require complicated care. It is safer than a wooden board – thanks to the brushing process it has a non-slip surface and no splinters.

Properties



- resistance to low temperatures
- UV resistance
- resistance to fungi, lichen and mold
- wear resistance
- PVC warp

Innovation



- co-extrusion
- invisible assembly
- quick assembly
- only high quality wood used

Safety



- anti-slip, brushed surface
- non-flammability
– flammability class B





Beauty



We mastered each item in detail. This is why our boards and mounting items allow the creation of extremely fine-looking terraces and balconies. We offer boards in all kinds of surfaces and colours, and additionally guarantee an aesthetic installation, which enables an even more unique effect.

Durability



Timberness is more than just goodlooking projects. It is also their durability. This is why we did our best to choose materials that provide stiffness and resistance to mechanical damage. After appropriate tests, we are sure that our products can serve for at least 25 years.

Convenience



We wanted to improve the ease of use of our products. We made sure to offer comfortable solutions at every stage. Our innovative assembly and finishing systems make the mounting of boards, as well as their subsequent upkeep, much easier.

Innovative technology

Timberness hybrid board is an innovation in the market of composite boards. Thanks to the co-extrusion technology (i.e., extruding several layers at once) we obtained a rigid and durable board with a compact structure and a beautiful, durable surface.

Core

The ingredients used in its production have been chosen so as to increase the resistance of the board to high loads and water absorption. In conjunction with the hollow chamber construction it gives the same stiffness and hardness as in the case of solid boards. The structure of the board makes it 50% lighter and much more environmentally friendly. It is also less susceptible to dimensional changes under the influence of atmospheric factors.

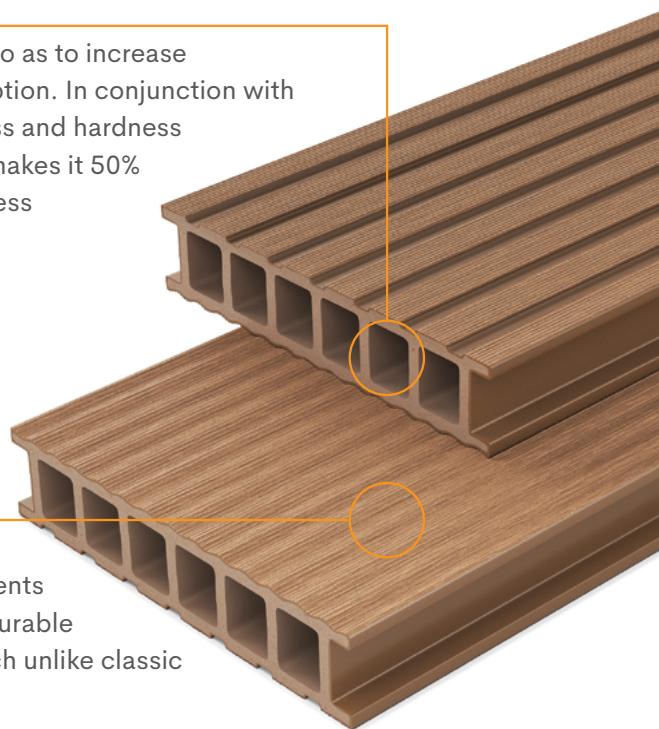
2x

higher core strength

less susceptible to water absorption

WPC surface

It is made of a combination of high class wood with high quality polymer and additives. Such a selection of ingredients secures weather resistance, a beautiful appearance and durable colours. The result is an elegant and aesthetic board, which unlike classic wood has no cracks or splinters.



For the production of the outer layer of boards we use the highest quality supplements. These are UVA and UVB filters, antioxidants, biocides, flame retardants, pigments with high resistance to fading, calcium-zinc stabilizers and impact modifiers (which increase resistance to high loads).

What does it give us?

Thanks to these additions, Timberness boards are resistant to atmospheric agents, moss, fungi, insects and bacteria, high and low temperatures, they are non-flammable, do not rot, do not contain lead or other heavy metals and are less susceptible to discoloration during use. The use of such a high-quality and expensive raw material mixture for the production of standard composite WPC boards would lead to doubling the price of the finished product.

We have solved this problem. 

Most of the additives contained in the inner, core part of the board have no function and are only used as an extremely expensive filler, unreasonably raising its price. Thanks to the co-extrusion technology we produce boards, to the core of which we do not add unnecessary, yet very costly ingredients. As a result, the customer receives the highest quality product, but at a reasonable price.

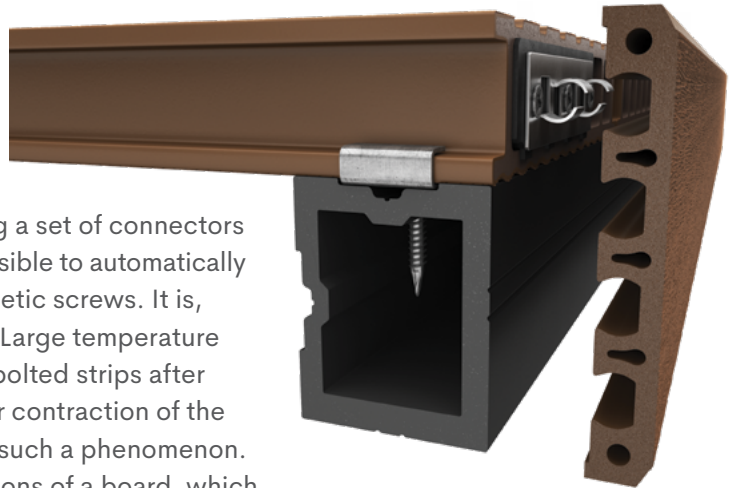
Innovative assembly

Our experience in the industry has enabled us to identify the common problems that occur in the case of composite boards. None of the products available on the market offer systems which ensure aesthetic installation and preserve the long-term "good as new" effect.

We thought about it.



We have created a special system that allows such a combination of boards and strip, which will be an added value of every completed project. Using a set of connectors attached to the boards and the profiled strip, it is possible to automatically join the elements without the need for using unaesthetic screws. It is, however, not the only advantage of this connection. Large temperature fluctuations in case of other systems may cause the bolted strips after some time to change their shape due to expansion or contraction of the boards. Our innovative joining of elements prevents such a phenomenon. Strips, whilst moving, adapt to the changing dimensions of a board, which prevents deformation and ensures long-lasting effect.

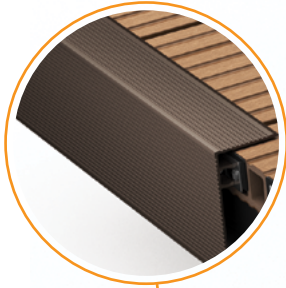


Our innovative connection system is awaiting the grant of a patent.

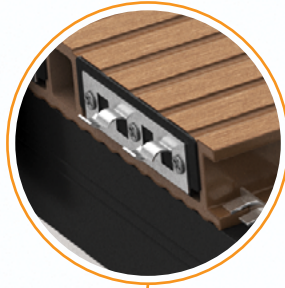


Timberness board assembly chart

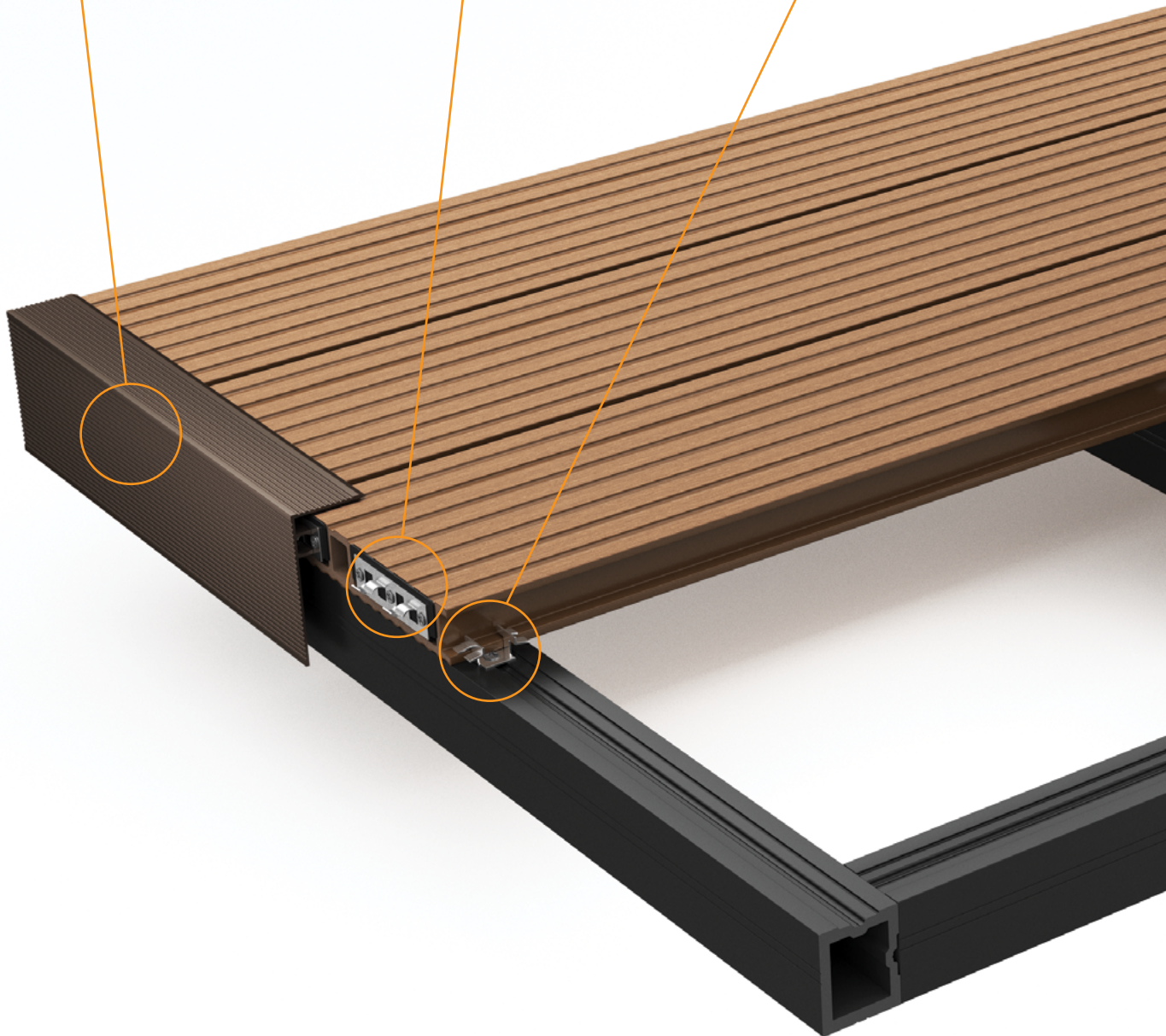
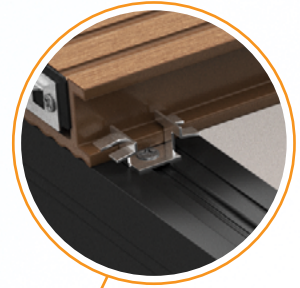
aluminium strip



PVC joint and OMEGA sliding clip



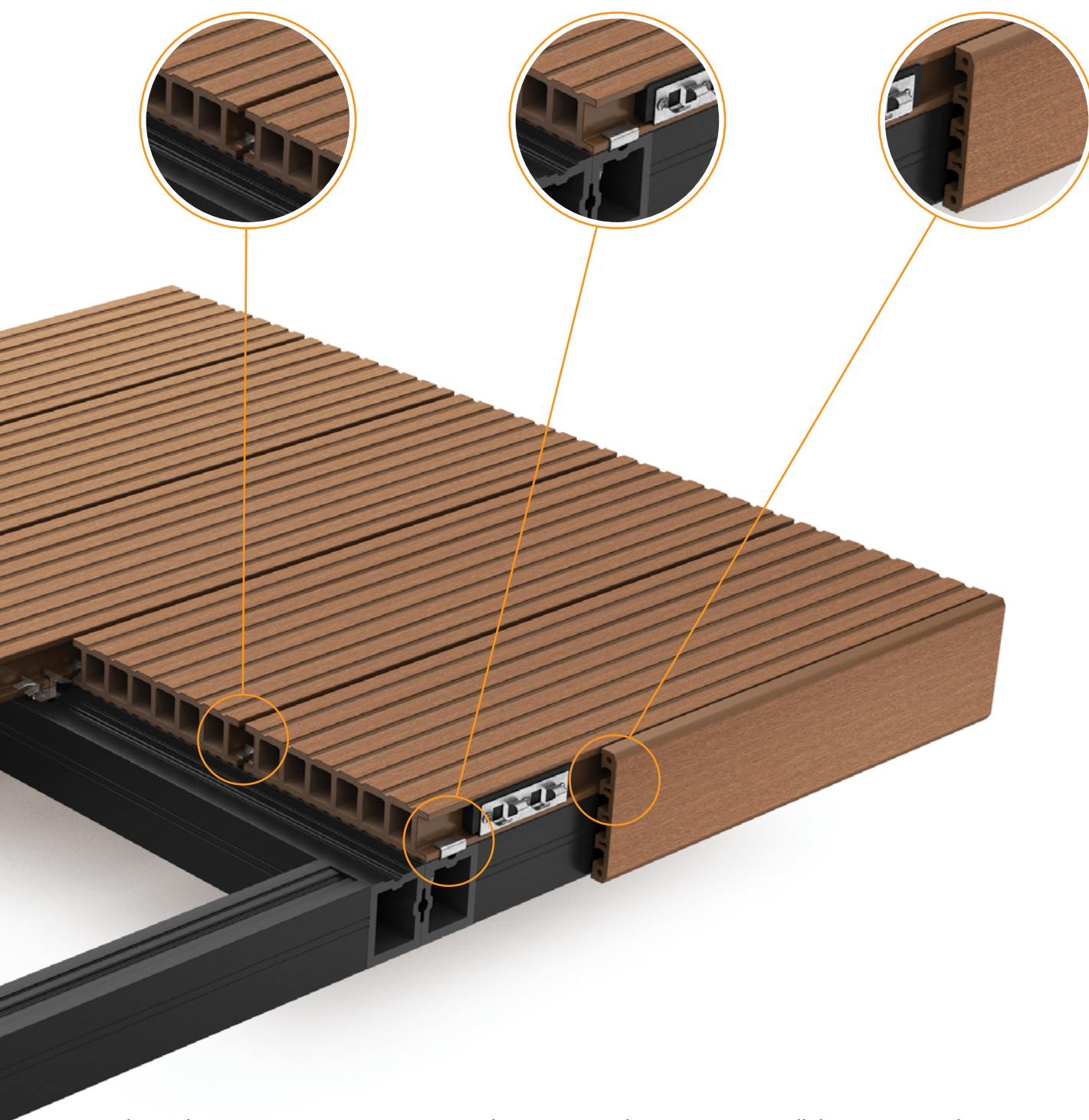
T-Clip



fixed dilatation
5 mm

starting clip

composite strip



The Timberness terrace system is a complete system – that is, it contains all the necessary elements, starting from boards, joists, to finishing strips and screws. Visit www.timberness.com to learn more about our terrace systems. You'll find answers to all your questions there.



SELECT board: installation faster by 24% compared to standard board with a width of 145 mm.

SELECT board is the choice for those looking for custom solutions. Its greater width gives a modern, unique look and allows the realization of original projects. It also allows the reduction of the number of necessary boards and speeds up the assembly. We also adjusted the height of the board – so that it is lower and it is possible to use it not only in the terrace, but also on the balcony. SELECT board has the classic design of the hollow core. It is manufactured from carefully selected raw materials.

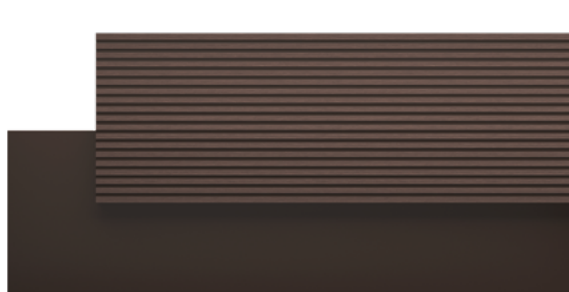
Specifications

Dimensions:

length: 4000 mm; width: 180 mm; height: 25 mm

On request, we can cut boards to the required length for your project – up to a maximum of 6500 mm.

Colours:



dark brown



light brown



graphite



gray

Due to the high proportion of natural wood fiber used in manufacturing this product there is some mild variation in colour to be expected between batches.

Board brushed on one side.

On special request, we also brush smooth surfaces.

With SELECT board choose a dedicated connector PVC SELECT for assembly of finishing strips.



What makes **PRIME** range special is 17% more stiffness compared to a standard width board.

When designing the PRIME board, we focused on increasing its strength. To achieve this, we improved the design of the hollow core. Increasing their number and height of the board makes the product much more rigid and therefore more resistant to external forces. Its versatility allows for use in terraces, ponds, patios or porches. The high quality of the components ensures their long-lasting beautiful appearance. These features make it the most commonly chosen from our offer of boards.

Specifications

Dimensions:

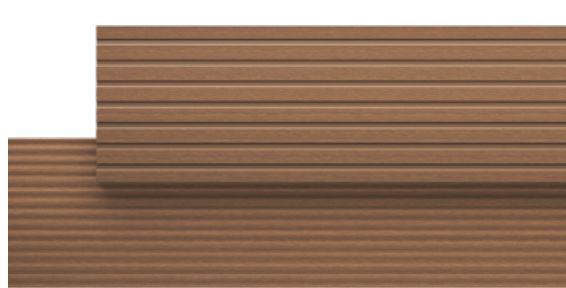
length: 4000 mm; width: 145 mm; height: 30 mm

On request, we can cut boards to the required length for your project – up to a maximum of 6500 mm.

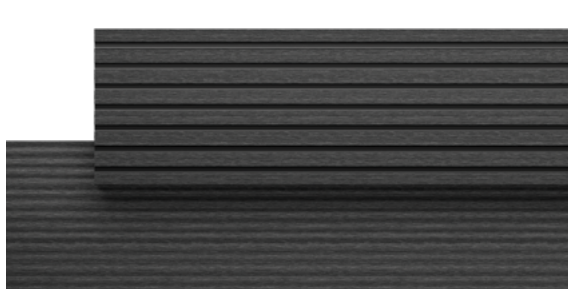
Colours:



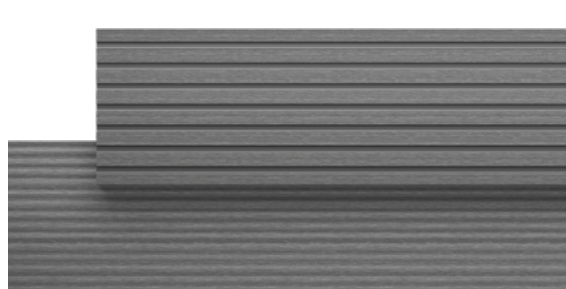
dark brown



light brown



graphite



gray

Due to the high proportion of natural wood fiber used in manufacturing this product there is some mild variation in colour to be expected between batches.

The PRIME board is double-corrugated. It has different surface patterns on both sides.

The side indicated by the customer is additionally brushed.

With PRIME board choose a dedicated connector PVC PRIME for assembly of finishing strips.

Mounting accessories

Joists

Depending on the prepared substrate and the permissible height of the terrace, we offer three types of beams. All our beams may be used for any type of boards.

Low joist

Dedicated to the mounting of boards on balconies and terraces – where boards are placed directly on a concrete slab or tiles. The lower part of the joist must adhere with the entire surface to the substrate.

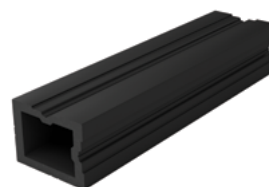
Dimensions: width: 40 mm; height: 20 mm; length: 4000 mm



Standard joist

Universal – for use on any type of surfaces. The lower part of the joist must adhere with the entire surface to the substrate. By adjusting the top and the lateral side of the joist to the clip, its height and width may be used interchangeably.

Dimensions: width: 50 mm or 40 mm; height: 40 mm or 50 mm; length: 4000 mm



Aluminium joist

Joist with enhanced strength and stiffness. Perfect for installation on suspended structures – i.e. on concrete pillars. It allows the construction of the so-called "floating terraces".

Dimensions: width: 30 mm; height: 35 mm; length: 4000 mm

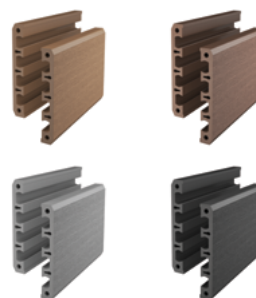


Finishing strips

Composite finishing strip

Strip made of WPC, ideal for finishing edges of terraces and balconies. In combination with the sliding clip it prevents the "swaying" of the strip with its relaxation under the influence of temperature. Available in four colours, perfectly matched to the colour of the boards.

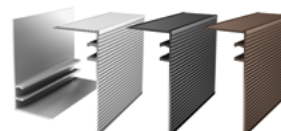
Dimensions: width: 80 mm; height: 12 mm; length: 4000 mm



Aluminium finishing strip

Aluminium finishing strip is ideal for the corners of stairs. Thanks to the process of anodizing (protecting the aluminium surface) this strip is characterized by increased resistance to abrasion.

Dimensions: width: 42 mm; height: 82 mm; length: 4000 mm
Colours: silver, black, dark brown



Accessories for assembly of strips

The system of mounting finishing strips is the innovation of Timberness. Our own solution allows the mounting of the strips without unaesthetic screws.

OMEGA sliding clip

Innovative sliding clip made of stainless steel.

Mounted with a joint to the front or side of the board or beam.

It enables invisible, durable assembly of a finishing strip. It ensures free movement of the strip. OMEGA clip is universal – suitable for every type of Timberness board.



PVC joint

PVC joint is used for mounting the sliding clip to the board.

When mounted from the face of the board, it is glued to it when placed in the hollow chambers of the board, and when mounted on the side edges of the board – mounted by means of screws.

Each Timberness board, because of the unique chamber system, requires dedicated joints.

Therefore, we offer two types:

PVC joint SELECT and PVC joint PRIME.



PVC joint PRIME



PVC joint SELECT

Kit for assembly of boards

The set comprises of stainless steel clips and screws.

Starting clip is used to mount the first board. While T-Clip (or T-Clip Flat) allows the connecting of the boards together. Its unique design ensures a stable assembly while compensating for movements of boards under the influence of temperature. It leaves a permanent dilatation between the boards.

When assembling the boards on aluminium joists an assembly kit with dedicated T-Clip Flat should be used.

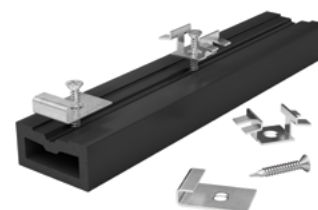
The assembly kit comprises of:

50 T-Clips or T-Clips Flat

4 starting clips

60 stainless steel screws

Colour: inox



T-Clip



T-Clip Flat

Worth knowing

Seasoning



The advantage of Timberness boards is the use of high quality wood. The natural feature wood fibres is that they react to sun and rain. Therefore, in the first period after mounting, boards may change their colour. This phenomenon is nothing alarming, because it's a natural process. Such stabilization of wood in a composite board under the influence of atmospheric factors is called seasoning. This process may last – depending on the weather, i.e. exposure to the sun and intensity of precipitation – from one to four months. A natural phenomenon in the first phase of seasoning is characteristic "yellowing" that lasts up to a month after installation. During this time, the colour of the boards may be slightly different than expected. Only after a period of seasoning do the boards take their proper colour. Please note that the final colour of the board is slightly brighter than before installation, and over time will continue to gently brighten. It is a characteristic of all composite boards.

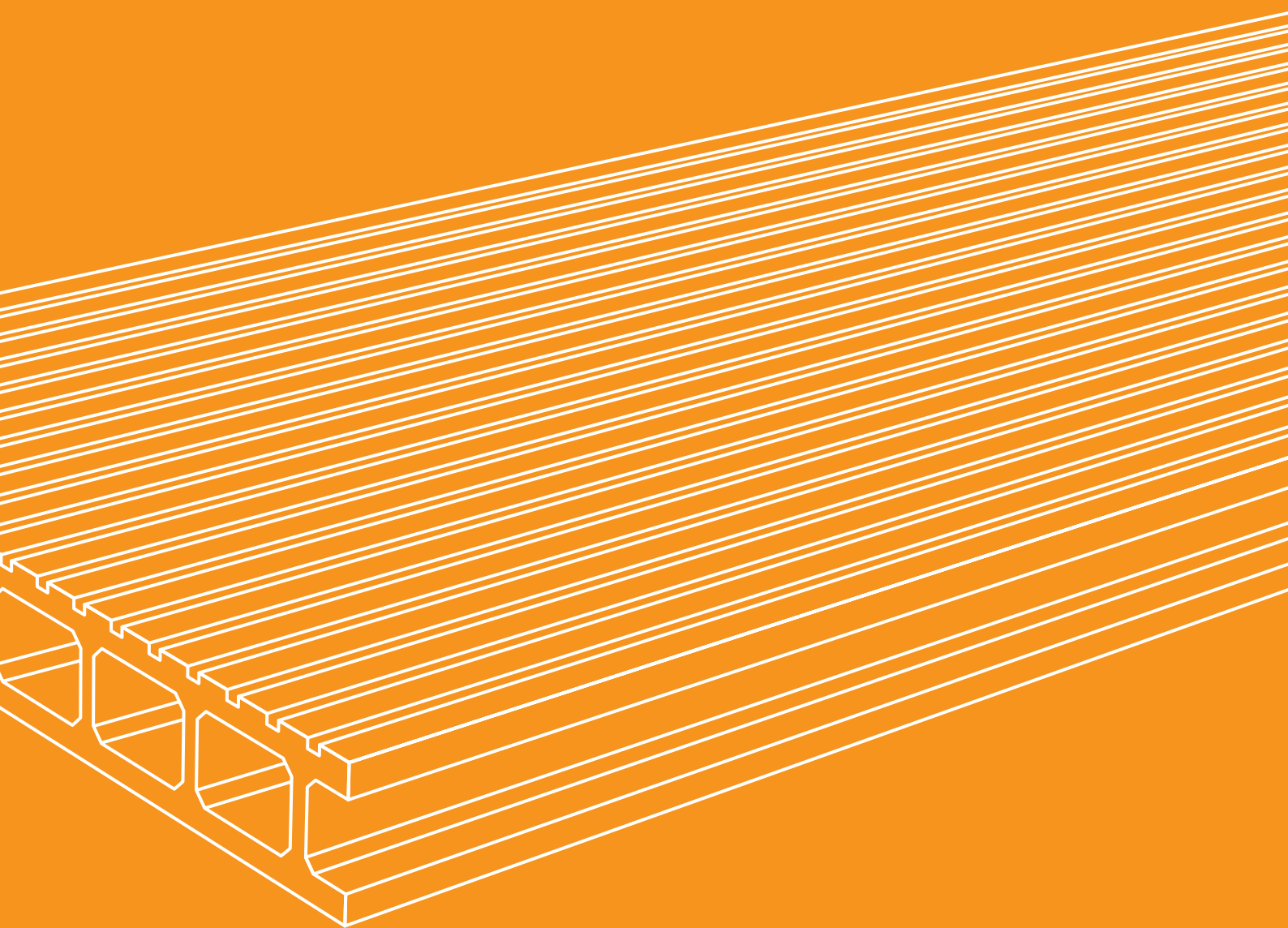
Maintenance



Another advantage of the hybrid composite boards is that, in contrast to wood, they do not require complicated maintenance. They only require cleaning – just with water and mild detergent. For the care of the boards we recommend using a high pressure washer, which allows for accurate removal of contamination.



Fliberlab S.A.
Brzezcie 387
32-014 Brzezcie, Poland
phone: +48 531 503 100
contact@timberness.com
www.timberness.com



All rights reserved.

©Fiberlab S.A., Brzezcie 387, 32-014 Brzezcie, Poland

The author of the photographs used in the catalogue is Paweł Ulatowski.
pawelulatoski@icloud.com